



# WOOD ROBSON HOMES

QUALITY+DESIGN



LIFESTYLE SERIES

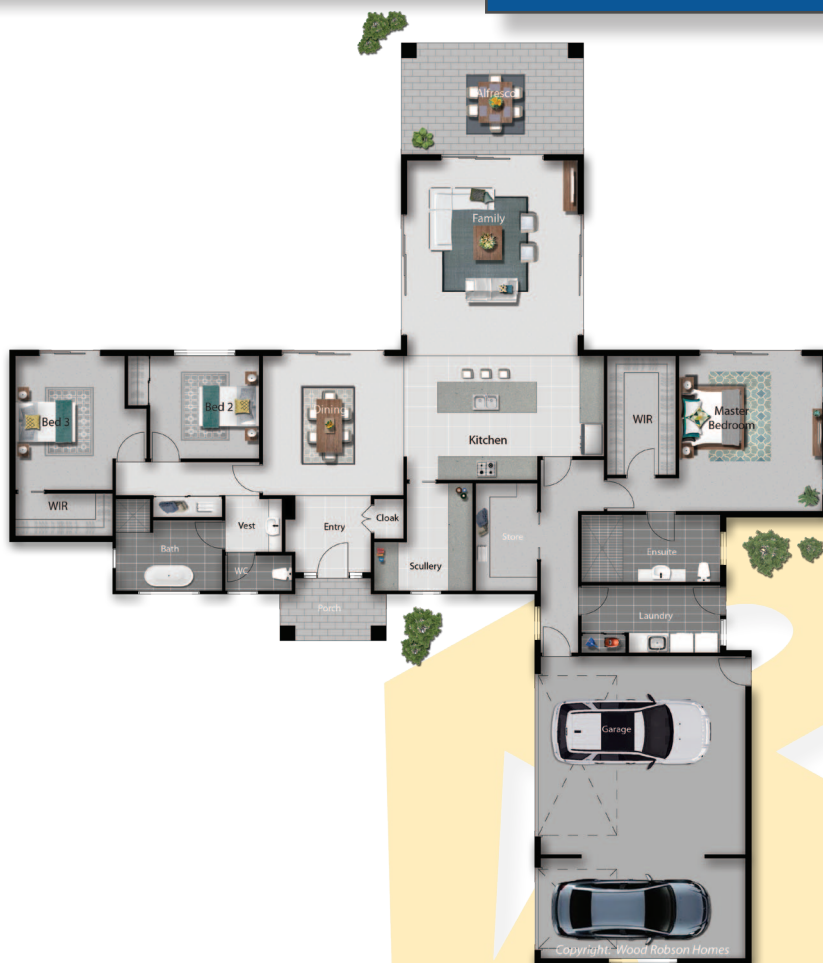
Castlepoint

## Features

Contemporary home  
3 Bedroom, 2 Bath  
Triple car garage  
Open plan living & dining  
Entertainer's Kitchen with scullery  
Master with ensuite & WIR  
Generous walk in storage  
Alfresco off main living areas

## Areas

Living	199.56 m <sup>2</sup>
Garage	53.44 m <sup>2</sup>
Alfresco	17.00 m <sup>2</sup>
Porch	5.6 m <sup>2</sup>
Total	275.60 m <sup>2</sup>
Width	23.73 m
Length	23.89 m



Display: 699 Tremain Ave, Palmerston North 4410 Phone: 0800 879 679 Email: [sales@woodrobsonhomes.co.nz](mailto:sales@woodrobsonhomes.co.nz)  
[www.woodrobsonhomes.co.nz](http://www.woodrobsonhomes.co.nz)

#### DISCLAIMER

PHOTOGRAPHS & ILLUSTRATIONS ARE INTENDED TO BE A VISUAL AID ONLY. WOOD ROBSON HOMES GIVES NO WARRANTY AND MAKES NO REPRESENTATION TO THE ACCURACY OR SUFFICIENCY OF ANY DESCRIPTION, ILLUSTRATION, PHOTOGRAPH OR STATEMENT CONTAINED IN THIS BROCHURE AND ACCEPTS NO LIABILITY FOR ANY LOSS SUFFERED BY ANY PERSON WHO RELIES ON EITHER WHOLLY OR PARTLY UPON THE INFORMATION PRESENTED. ALL INFORMATION IS SUBJECT TO CHANGE WITHOUT NOTICE. © COPYRIGHT WOOD ROBSON LTD